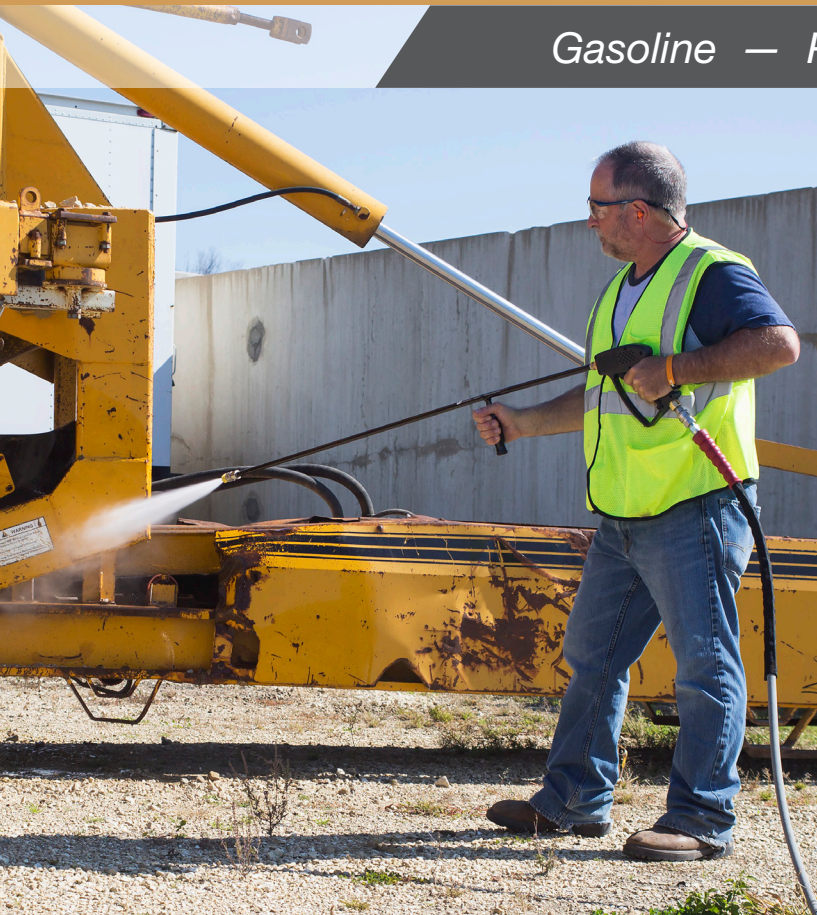


Gasoline — Portable with Roll Cage — Belt Drive



DC-5004-WC4H6A

*This series is an ideal choice for heavy-duty jobs. Equipped with a robust, rugged roll cage, it is a great option for cleaning ag, construction and industrial equipment.*

#### PUMP

- External bypass system protects from heat build-up
- Factory preset stainless-steel and brass unloader
- Forged brass manifold
- Thermal and safety relief valves
- Water filter with clear sleeve for screen inspection (High capacity water filter on DC-3008-WC4H6G)

#### ENGINE

- Electric start – battery not included
- Performance-proven OHV engine with low-oil shutdown

#### FRAME

- Powder coated steel frame with 1¼-inch roll cage, handles and lifting hook
- Two-piece belt guard
- 13-inch flat-free tires with locking tire brake

#### COMPONENTS

- Fuel tank has powder coated outside and aluminized steel inside to prevent rusting
- 13-gallon fuel tank capacity for 9½ hour run time

#### UNIT INCLUDES

- Quick connect nozzles – 0°, 15°, 25° and 40°
- 50-foot x ¾-inch non-marking hose (DC-5000 and DC-6004 models)
- 50-foot x ¾-inch black hose (DC-7004-WC4H6G)
- 50-foot x ½-inch black hose (DC-3008-WC4H6G)
- 48-inch lance with rubber grip
- Professional-grade insulated trigger gun with safety lock-off

#### LIMITED WARRANTY

- 3 year engine

#### CERTIFICATION

- ETL Certified – US (DC-5004-WC4H6A, DC-5004-WC4H6G and DC-5005-WC4H6G)





# Premium Series

## Cold Water – Gasoline – Portable with Roll Cage – Belt Drive

MODEL NUMBER	PSI	GPM	DISPLACEMENT/ENGINE	PUMP	DIMENSIONS (LxWxH)	SHIP WT.	NET WT.
DC-3008-WC4H6G	3000	8.0	688cc Honda GX630 OHV	General	43x27.75x38.5in.	504 lb.	438 lb.
DC-5004-WC4H6A	5000	4.0	688cc Honda GX630 OHV	AR	43x27.75x38.5in.	499 lb.	433 lb.
DC-5004-WC4H6G	5000	4.0	688cc Honda GX630 OHV	General	43x27.75x38.5in.	515 lb.	449 lb.
DC-5005-WC4H6G	5000	5.0	688cc Honda GX630 OHV	General	43x27.75x38.5in.	515 lb.	449 lb.
DC-6004-WC4H6G	6000	3.7	688cc Honda GX630 OHV	General	43x27.75x38.5in.	515 lb.	449 lb.
DC-7004-WC4H6G	7000	3.8	688cc Honda GX690 OHV	General	43x27.75x38.5in.	515 lb.	449 lb.

### ACCESSORIES:

PART NUMBER	DESCRIPTION	FITS MODELS
851-0089	50-foot x 1/2-inch hose – For when you need extra hose for added mobility	DC-3008-WC4H6G
851-0317	50-foot x 3/8-inch non-marking hose – For when you need extra hose for added mobility	DC-5004, DC-5005 & DC-6004 models
851-0420	50-foot x 3/8-inch hose – For when you need extra hose for added mobility	DC-7004-WC4H6G
AW-7012-7004	Power broom with rotating nozzle – Rotating nozzle with two wheels for easy mobility, 3.0 orifice size	DC-7004-WC4H6G
AW-7500-0035	Rotating nozzle – Increase your cleaning power and decrease your cleaning time, 0° spray with 25° coverage, 3.5 orifice size	DC-5004 models
AW-7500-0045	Rotating nozzle – Increase your cleaning power and decrease your cleaning time, 0° spray with 25° coverage, 4.5 orifice size	DC-5005-WC4H6G
AW-0018-0374	Rotating nozzle – Increase your cleaning power and decrease your cleaning time, 0° spray with 25° coverage, 3.0 orifice size	DC-6004 & DC-7004 models

### OPTION:

PART NUMBER	DESCRIPTION	FITS MODELS
CX-0118	Skid feet – Stationary applications	All models



**WARNING:** Cancer and Reproductive Harm - [www.P65Warnings.ca.gov](http://www.P65Warnings.ca.gov).